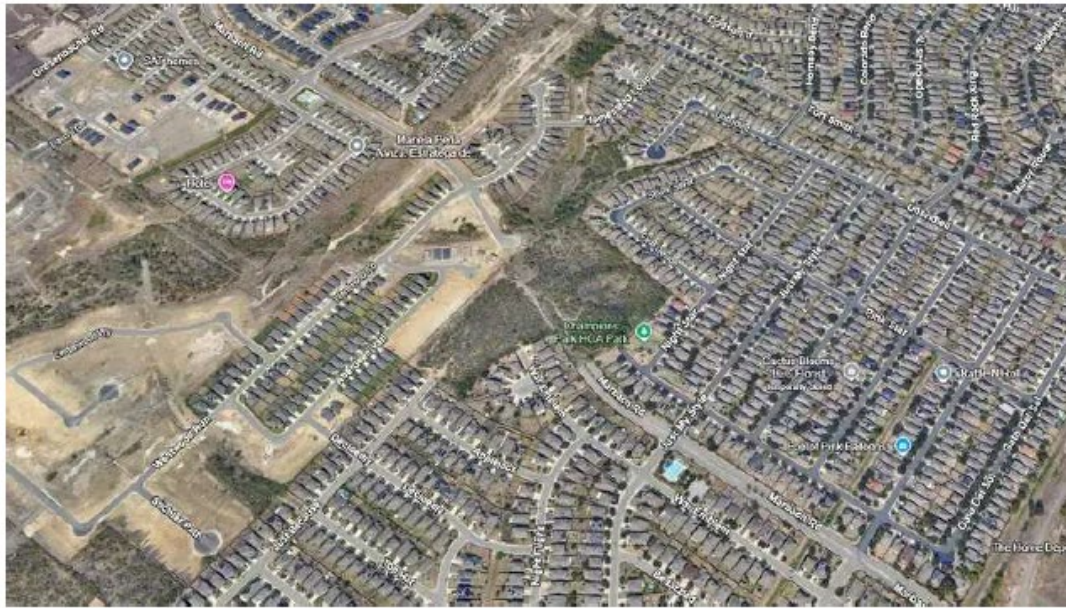


Bexar County plans to close troublesome gap on Marbach Rd

The county says it will partner with a developer to bridge the roughly 250-yard divide on Marbach, which has long frustrated drivers in the area.

By **Richard Webner**, Staff Writer

Oct 16, 2025



The Bexar County Commissioners Court has voted to enter into an agreement with a private developer to build out a small portion of Marbach Road, bridging a gap that now exists in the road on the far West Side. Courtesy of Google Earth

To view the broken path of Marbach Road on the far West Side, past its crossing with Loop 1604, is to witness a source of frustration for many of the area's drivers.

The road is snapped into two segments west of the highway, with a roughly 250-yard stretch of woodland separating them. The gap means you can't drive on Marbach all the way from Loop 1604 to its western endpoint, where it intersects with Groesenbacher Road. This has led drivers to seek alternate routes through the quiet streets of the booming area's many subdivisions, according to Bexar County.

That is set to change, after the Bexar County Commissioners Court voted this week to partner with the developer that owns the stretch of woodland to fill in that missing stretch of road.

Under an agreement the court approved on its consent agenda, the developer — an entity linked with the Tempe, Arizona-based company Coronado West — will donate the 1.4 acres on which the four-lane road will run and hire an engineering firm to design the roadway. The county will construct the missing stretch, linking the Champions Park and Laurel Vistas subdivisions, at an estimated cost of \$2.4 million.

The county expects to begin construction near the end of 2026, with the roadway opening to traffic in mid-2027, county spokesperson Tiffany Payton said.

"Connecting this existing gap in Marbach Road will provide a much needed arterial road to improve east-west travel," the county said in a written statement.

The commissioners court allocated the funds for the road's construction when it approved its annual budget on Sept. 9.

The city of San Antonio, in its [Major Thoroughfare Plan](#), envisions Marbach Road serving as a key east-west thoroughfare linking Loop 1604 and Texas 211. The thoroughfare plan's map shows Marbach linking with Groesenbacher Road, which would be extended beyond Texas 211, as far west as as yet-to-be-built stretch of Mechler Road running north-south near the boundary between Bexar and Medina counties.

As of today, Groesenbacher Road is missing many segments between its crossings with Marbach and Texas 211.

Marbach Road was extended past Loop 1604 around 2006, according to historical satellite imagery from Google Earth. The disconnected portion farther west was built about 12 years later.