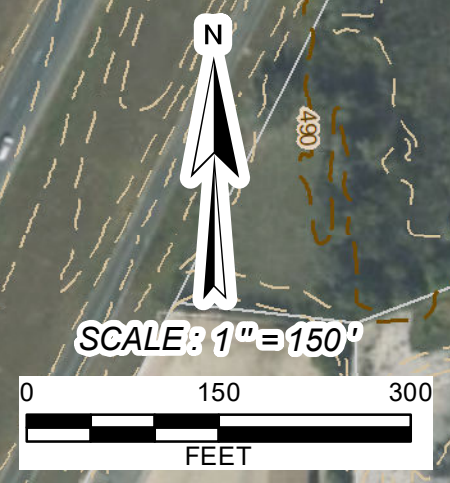


ISSUE DATE
 REVISIONS

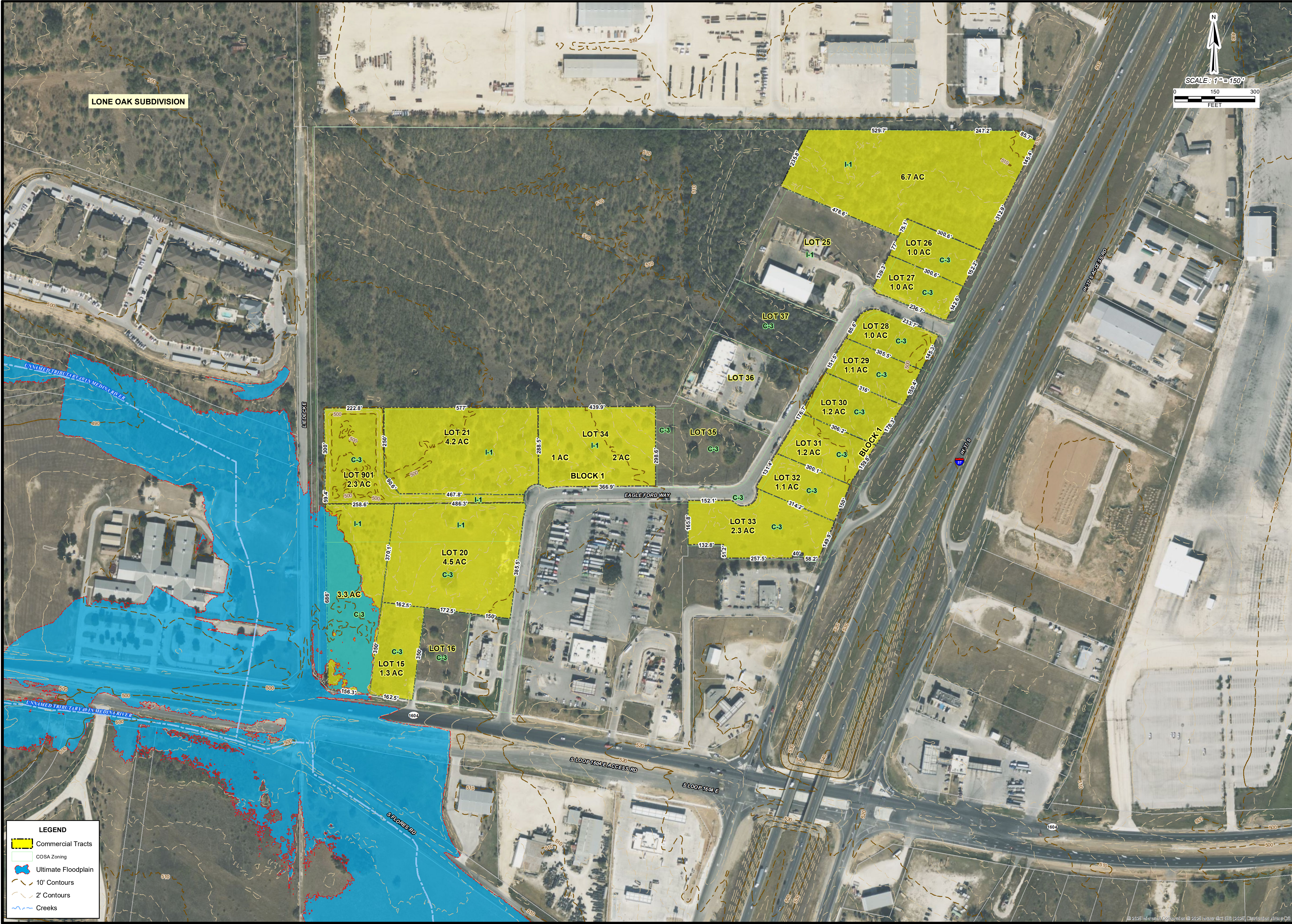
LONE OAK COMMERCIAL
 SAN ANTONIO, BEXAR COUNTY, TX

JOB NO. 823-07-02
 DATE: January 2025
 DRAWN: M.C. CHECKED: C.L.

SHEET NUMBER:
1 OF 1



LONE OAK SUBDIVISION



LEGEND

- Commercial Tracts
- COSA Zoning
- Ultimate Floodplain
- 10' Contours
- 2' Contours
- Creeks

Date: Jan 28, 2025, 6:38:05 PM User: D. meutz
 File: L:\2025\07\2025\GIS\Commercial\823-07-02-LoneOak_Commercial.mxd